

MV-LDSS-H

Standard Spot Light

MV-LDSS-H standard spot light adopts efficient light-guiding design and highlight LED. With new shape and heat-dissipation design, the spot light features high stability and long service life.



Key Features

- The light outlet adopts efficient light-guiding design and highlight LED.
- Adopts compact size and high heat-dissipation structural design.
- Can be matched with telecentric series lenses.

Applicable Industry

Mark spot location, chip character detection, quality detection of electronic components, etc.

Naming Rule

MV - LDSS - H - 8 - 3 - *

LDSS: standard spot light

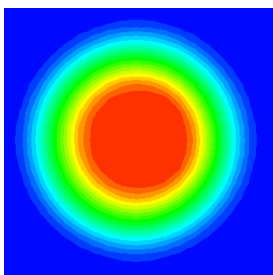
H: Hikrobot style series

8: optical outlet diameter

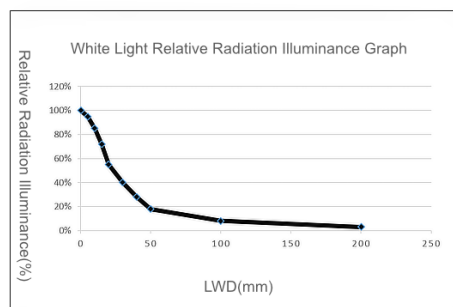
3: power

*****: color

Illuminance Distribution Image



Relative Radiation Illuminance Curve Under White Light



Lighting



Specification

Model	Parameter	Performance			Mechanical			Electrical feature			Irradiation	
		Color	Center illuminance/irradiance	Best working distance	Dimension	Optical outlet diameter	Weight	Power	Input current	Connector type	Safety class	Safety distance
MV-LDSS-H-8-3-W		White	> 20K lux @ WD = 100 mm	65 mm to 200 mm	59 mm × Ø24 mm	Ø8 mm	75 g	2 W	680 mA	SMR-03V-B	RG1	0.45 m
MV-LDSS-H-8-3-B		Blue	> 4K lux @ WD = 100 mm	65 mm to 200 mm	59 mm × Ø24 mm	Ø8 mm	75 g	2.1 W	680 mA	SMR-03V-B	RG2	0.55 m
MV-LDSS-H-8-3-R		Red	> 7K lux @ WD = 100 mm	65 mm to 200 mm	59 mm × Ø24 mm	Ø8 mm	75 g	1.7 W	680 mA	SMR-03V-B	No danger	/
MV-LDSS-H-8-3-G		Green	> 25K lux @ WD = 100 mm	65 mm to 200 mm	59 mm × Ø24 mm	Ø8 mm	75 g	2.1 W	680 mA	SMR-03V-B	No danger	/
MV-LDSS-H-8-3-Y		Yellow	> 20K lux @ WD = 100 mm	65 mm to 200 mm	59 mm × Ø24 mm	Ø8 mm	75 g	2 W	680 mA	SMR-03V-B	No danger	/
MV-LDSS-H-8-3-IR1300		IR1300	> 12 W/m ² @ WD = 100 mm	65 mm to 200 mm	59 mm × Ø24 mm	Ø8 mm	75 g	1.1 W	800 mA	SMR-03V-B	RG1	0.45 m

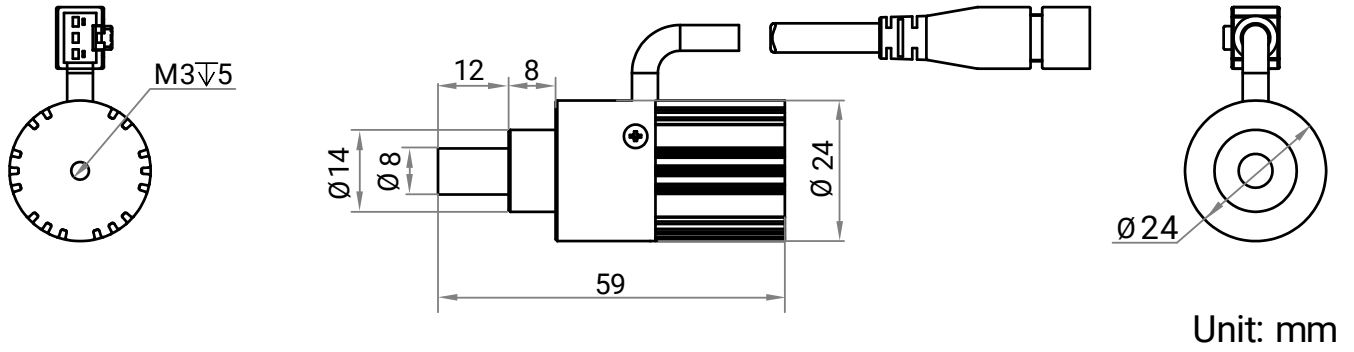
Other Parameters

Model	MV-LDSS-H
Parameter	Standard Spot Light
Performance	
Drive mode	Constant current
Wavelength	B: 465 nm to 475 nm R: 620 nm to 630 nm G: 515 nm to 530 nm Y: 580 nm to 595 nm IR1300: 1250 nm to 1350 nm
Color temperature	W: 6000K to 7000K
Mechanical	
Cable length	1 m
Cooling mode	Natural cooling
Temperature	Working temperature: 0 °C to 40 °C (32 °F to 104 °F) Storage temperature: -20 °C to 60 °C (-4 °F to 140 °F)
Humidity	20% RH to 90% RH (no condensation)

Note

Blue Light Hazard Label	Light Source Prevention
<div style="border: 1px solid black; padding: 5px;"> <p>2类危险 RISK GROUP 2</p> <p>警告：该产品可能有光辐射危害。 警告：灯工作时不能直视，可能伤害眼睛。 CAUTION Possibly hazardous optical radiation emitted from this product. Do not stare at operating lamp. May be harmful to the eyes.</p> </div>	<ul style="list-style-type: none"> Measured at 200 mm distance, some models of this device have a retinal blue light hazard. Do not stare at an operating light source. Protective measures like wearing safety goggles are required when installing, maintaining and debugging the device.

Dimension



HIKROBOT

Hangzhou Hikrobot Co. Ltd.
en.hikrobotics.com

© Hangzhou Hikrobot Co., Ltd. All Rights Reserved.
Hangzhou Hikrobot does not tolerate any infringement. Any organization or individual may not imitate or reproduce in whole or in part of the content. The data herein is based on Hikrobot's internal evaluation. Actual data may vary depending on specific configuration and operating condition. The information herein is subject to change without notice. All the content has been checked conscientiously. Nevertheless, Hikrobot shall not be liable to damages resulting from errors, inconsistencies or omissions.