

MV-CU013-A1GC

1.3 MP 1/2" GigE Area Scan Camera



GEN<i>i</i>CAM

GIG[®]

Introduction

MV-CU013-A1GC camera adopts CMOS sensor to provide high-quality images. It uses GigE interface to transmit non-compressed images in real time, and its max. frame rate can reach 90 fps in full resolution.

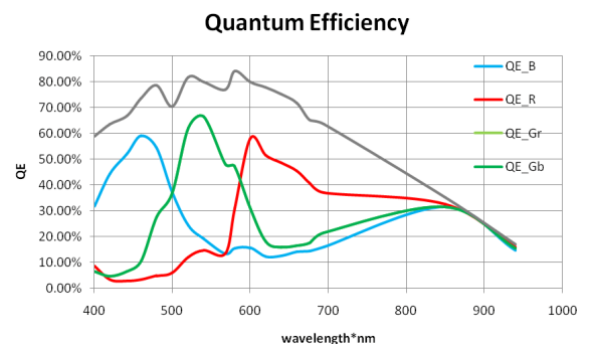
Key Features

- Adopts low power consumption design with stable performance.
- Supports auto or manual adjustment of gain, exposure time etc.
- Supports Sequencer and multiple ISP functions to provide high-quality images.
- Supports hardware trigger, software trigger, anyway mode, etc.
- Adopts GigE interface and max. transmission distance of 100 meters without relay.
- Compatible with GigE Vision V2.0 Protocol, GenICam Standard, and third-party software based on the protocol and standard.

Available Model

- Color camera: MV-CU013-A1GC

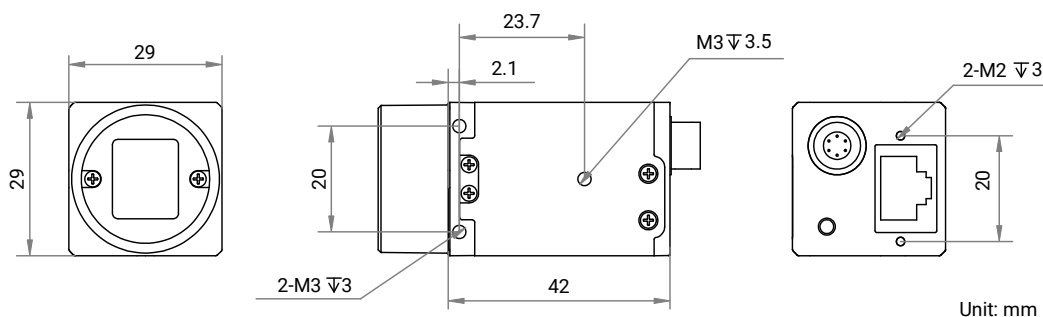
Sensor Quantum Efficiency



Applicable Industry

Electronics and semiconductor, factory automation, logistics and code reading, medicine package, etc.

Dimension



Specification

Model	MV-CU013-A1GC
Performance	
Sensor type	CMOS, global shutter
Pixel size	4.8 μm \times 4.8 μm
Sensor size	1/2"
Resolution	1280 \times 1024
Max. frame rate	90 fps @ 1280 \times 1024 Bayer GB 8
Dynamic range	54.2 dB
SNR	40.3 dB
Gain	0 dB to 16.4 dB
Exposure time	58 μs to 10 sec
Exposure mode	Off/Once/Continuous exposure mode
Mono/color	Color
Pixel format	Mono 8/10/12 Bayer GB 8/10/10Packed/12/12Packed YUV422Packed, YUV422_YUYV_Packed RGB 8, BGR 8
Binning	Supports 1 \times 1, 2 \times 2, 4 \times 4
Decimation	Supports 1 \times 1, 2 \times 2, 4 \times 4
Reverse image	Supports horizontal and vertical reverse image output
Electrical feature	
Data interface	Gigabit Ethernet (1000 Mbit/s), compatible with Fast Ethernet (100 Mbit/s)
Digital I/O	6-pin P7 connector provides power and I/O, including opto-isolated input \times 1 (Line 0), opto-isolated output \times 1 (Line 1), bi-directional non-isolated I/O \times 1 (Line 2).
Power supply	9 VDC to 24 VDC, PoE is optional
Power consumption	Typ. 2.2 W @ 12 VDC
Mechanical	
Lens mount	C-mount
Dimension	29 mm \times 29 mm \times 42 mm (1.1" \times 1.1" \times 1.7")
Weight	Approx. 100 g (0.2 lb.)
Ingress protection	IP30 (under proper lens installation and wiring)
Temperature	Working temperature: 0 $^{\circ}\text{C}$ to 50 $^{\circ}\text{C}$ (32 $^{\circ}\text{F}$ to 122 $^{\circ}\text{F}$) Storage temperature: -30 $^{\circ}\text{C}$ to 80 $^{\circ}\text{C}$ (-22 $^{\circ}\text{F}$ to 176 $^{\circ}\text{F}$)
Humidity	20% RH to 95% RH (no condensation)
General	
Client software	MVS or third-party software meeting with GigE Vision Protocol
Operating system	32/64-bit Windows 7/10, 64-bit Windows 11, 32/64-bit Linux
Compatibility	GigE Vision V2.0, GenICam
Certification	CE, RoHS, KC