

MV-CU013-80GM/GC V2

1.3 MP 1/2.7" GigE Area Scan Camera



GEN*i*CAM

GigE[®]

Introduction

MV-CU013-80GM/GC V2 camera provides high-quality images. It uses GigE interface to transmit non-compressed images in real time, and its max. frame rate can reach 89.9 fps in full resolution.

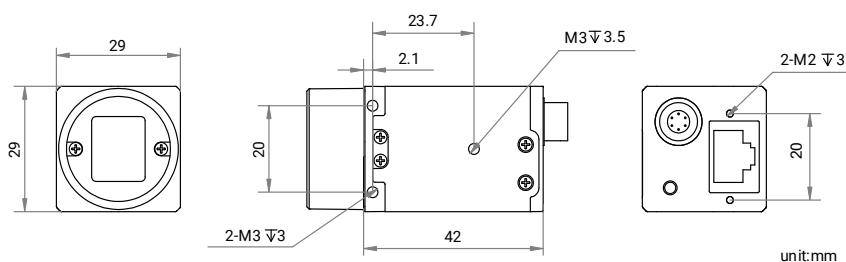
Key Features

- Supports auto or manual adjustments of gain, exposure time, LUT, Gamma correction, etc.
- Adopts GigE interface and max. transmission distance of 100 meters without relay.
- Compatible with GigE Vision V2.0 Protocol, GenICam Standard, and third-party software based on the protocol and standard.

Applicable Industry

Electronic semiconductor, factory automation, logistics and code reading, medicine packing, etc.

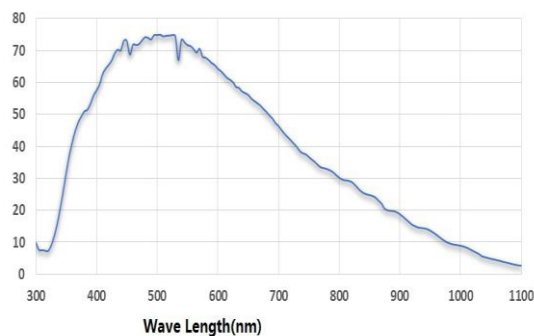
Dimension



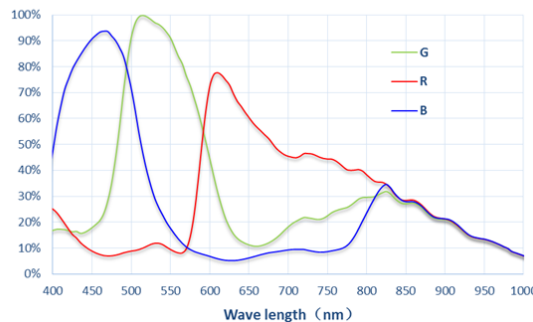
Available Model

- Mono camera: MV-CU013-80GM V2
- Color camera: MV-CU013-80GC V2

Sensor Quantum Efficiency



MV-CU013-80GM V2



MV-CU013-80GC V2

Specification

Model	MV-CU013-80GM V2	MV-CU013-80GC V2
Performance		
Sensor type	CMOS, global shutter	
Sensor model	SS	
Pixel size	4 μm × 4 μm	
Sensor size	1/2.7"	
Resolution	1280 × 1024	
Max. frame rate	89.9 fps @ 1280 × 1024 Mono 8	89.9 fps @ 1280 × 1024 Bayer BG 8
Dynamic range	54.5 dB	
SNR	39.2 dB	
Gain	0 dB to 20 dB	
Exposure time	31 μs to 1 sec	
Exposure mode	Off/Once/Continuous exposure mode	
Mono/color	Mono	Color
Pixel format	Mono 8/10/10Packed/12/12Packed	Bayer BG 8/10/10Packed/12/12Packed
Binning	Supports 1 × 1, 2 × 2, 4 × 4	
Decimation	Supports 1 × 1, 2 × 2, 4 × 4	
Reverse image	Supports horizontal and vertical reverse image output	
Electrical feature		
Data interface	Gigabit Ethernet (1000 Mbit/s), compatible with Fast Ethernet (100 Mbit/s)	
Digital I/O	6-pin P7 connector provides power and I/O, including opto-isolated input × 1 (Line 0), opto-isolated output × 1 (Line 1), bi-directional non-isolated I/O × 1 (Line 2).	
Power supply	9 VDC to 24 VDC, PoE is optional	
Power consumption	Typ. 1.9 W @ 12 VDC	Typ. 2.2 W @ 12 VDC
Mechanical		
Lens mount	C-mount	
Dimension	29 mm × 29 mm × 42 mm (1.1" × 1.1" × 1.7")	
Weight	Approx. 100 g (0.2 lb.)	
Ingress protection	IP30 (under proper lens installation and wiring)	
Temperature	Working temperature: 0 °C to 50 °C (32 °F to 122 °F) Storage temperature: -30 °C to 80 °C (-22 °F to 176 °F)	
Humidity	20% RH to 95% RH (no condensation)	
General		
Client software	MVS or third-party software meeting with GigE Vision Protocol	
Operating system	32/64-bit Windows 7/10, 64-bit Windows 11, 32/64-bit Linux	
Compatibility	GigE Vision V2.0, GenICam	
Certification	CE, RoHS, KC	