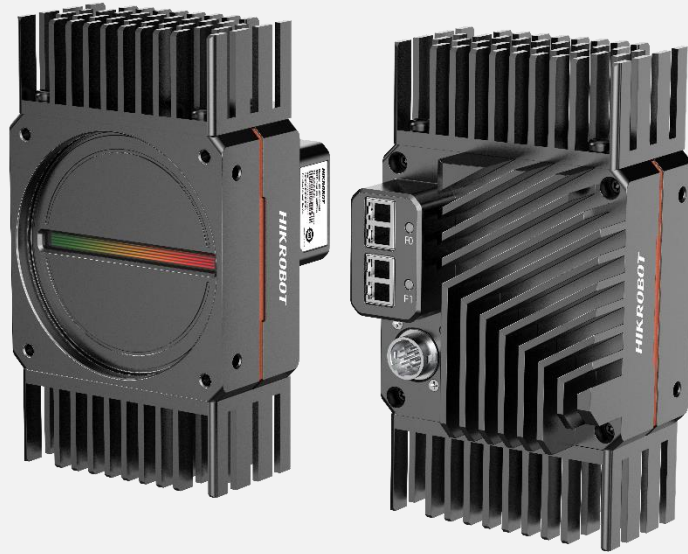


MV-CL162-91F2M

16384 P XoF Mono Line Scan Camera



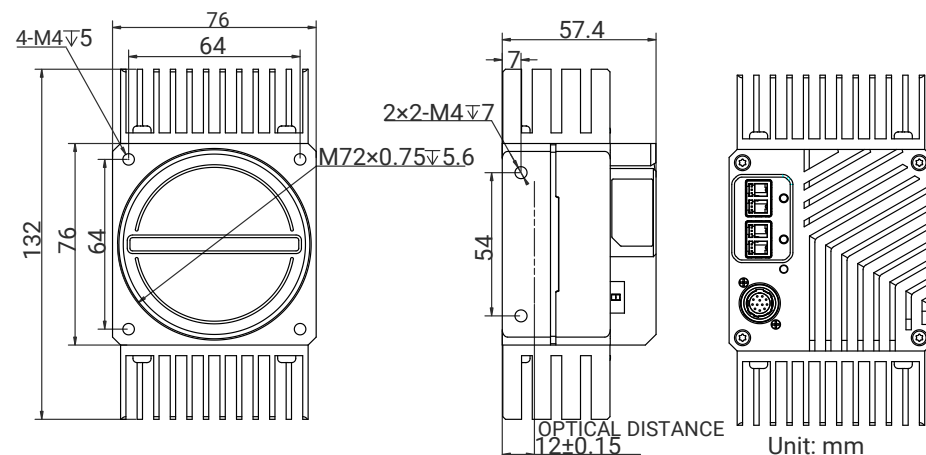
Introduction

MV-CL162-91F2M camera adopts 16384 × 2 CMOS sensor and supports transmission protocol of XoF, and its max. line rate reaches 120 kHz. It adopts multiple ISP image processing technologies, and is featured with high speed, high accuracy, and high performance.

Key Feature

- Adopts multiple ISP like Gamma correction, flat field correction, LUT, black level offset, etc.
- Provides dual XoF fiber connectors with 20 GB bandwidth.
- Supports multiple exposure and acquisition methods.
- Supports image mode of 1-Line and 2-TDI.
- Adopts bi-directional configurable I/O hardware design.
- Compact design and flexible installation.

Dimension



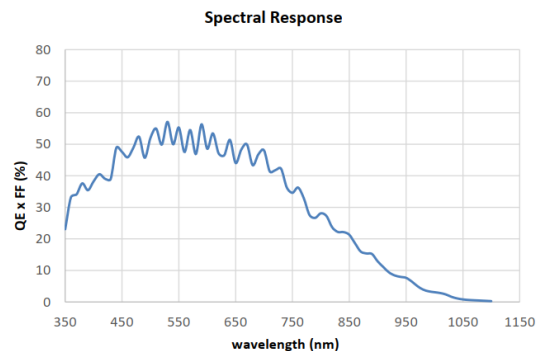
Available Model

MV-CL162-91F2M

Applicable Industry

New energy, screen detection, consumer electronics, PCB, etc.

Sensor Quantum Efficiency



Accessories

- Frame Grabber: MV-GS1002F
- SFP+ Module: MV-AC10G-SFP
- Fiber Patch Cable: MV-AC10G-2LC-2LC-ST

Specification

Model	MV-CL162-91F2M
Performance	
Sensor type	CMOS
Pixel size	3.5 μm \times 3.5 μm
Resolution	16384 \times 2
Image mode	Supports 1-Line, 2-TDI
Max. line rate	1 Link mode: 73.2 kHz (1-Line), 60 kHz (2-TDI) 2 Link mode: 120 kHz (1-Line), 60 kHz (2-TDI)
Transmission mode	1 Link, 2 Link
Dynamic range	56.7 dB
SNR	37 dB
Gain	1.0 \times
Exposure time	3 μs to 10 ms
Exposure mode	Off/Once/Continuous exposure mode, and supports trigger-width exposure
Mono/color	Mono
Pixel format	Mono 8/10/12
Binning	Supports 1 \times 1, 1 \times 2, 1 \times 4, 2 \times 1, 2 \times 2, 2 \times 4, 4 \times 1, 4 \times 2, 4 \times 4
Reverse image	Supports horizontal reverse image output
Trigger mode	External trigger, internal trigger
External trigger mode	Line trigger, frame trigger, line + frame trigger
Electrical feature	
Data interface	2LC fiber connector
Digital I/O	12-pin P10 connector provides power and I/O: Configurable input/output \times 4 (Line 0/1/3/4) and single-ended/differential is supported.
Power supply	12 VDC to 24 VDC
Power consumption	Typ. 10.6 W @ 24 VDC
Mechanical	
Lens mount	M72*0.75, flange back length 12 mm, applicable to F-mount via lens adapter
Dimension	132 mm \times 76 mm \times 57.4 mm (5.2" \times 3.0" \times 2.3")
Weight	Approx. 600 g (1.3 lb.)
Ingress protection	IP40 (under proper lens installation and wiring)
Temperature	Working temperature: -20 $^{\circ}\text{C}$ to 50 $^{\circ}\text{C}$ (-4 $^{\circ}\text{F}$ to 122 $^{\circ}\text{F}$) Storage temperature: -30 $^{\circ}\text{C}$ to 80 $^{\circ}\text{C}$ (-22 $^{\circ}\text{F}$ to 176 $^{\circ}\text{F}$)
Humidity	5% RH to 90% RH (no condensation)
Cooling mode	Natural cooling
General	
Client software	MVS
Operating system	32/64-bit Windows 7/10, 64-bit Windows 11
Compatibility	XoFLink, GenICam
Certification	CE, RoHS, KC, UL