

MV-CE100-30GM/GC

10 MP 1/2.3" CMOS GigE Area Scan Camera



GEN*i*CAM

GIG*E*
VISION

Introduction

MV-CE100-30GM/GC camera is a high quality device that can be used in a variety of applications, including electronic semiconductor fabrication, factory automation, quality inspection.

Key Feature

- Adopts GigE interface and max. transmission distance of 100 meters without relay.
- Up to 128 MB local memory for burst transmission and retransmission.
- Supports auto exposure control, LUT, Gamma correction, etc.
- Supports hardware trigger, software trigger, etc.
- Compatible with GigE Vision V1.2 Protocol, GenICam Standard, and third-party software based on the protocol and standard.

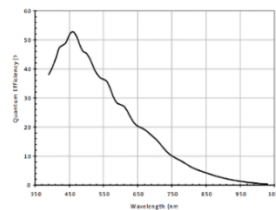
Available Model

- Mono camera: MV-CE100-30GM
- Color camera: MV-CE100-30GC

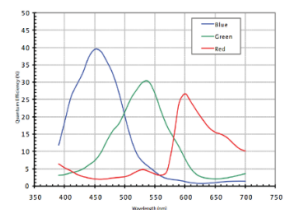
Applicable Industry

Electronic semiconductor, factory automation, quality inspection, etc.

Sensor Quantum Efficiency

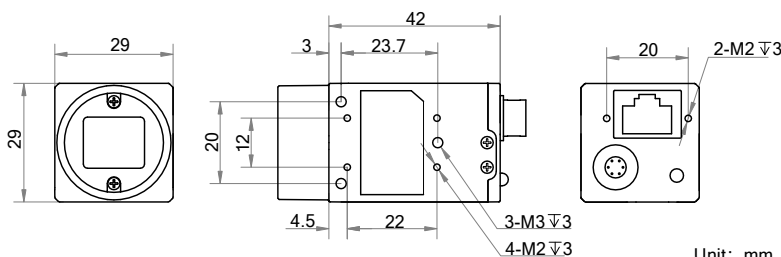


MV-CE100-30GM



MV-CE100-30GC

Dimension



Specification

Model	MV-CE100-30GM	MV-CE100-30GC
Camera		
Sensor type	CMOS, rolling shutter	
Sensor model	MT9J003	
Pixel size	1.67 μm \times 1.67 μm	
Sensor size	1/2.3"	
Resolution	3840 \times 2748	
Max. frame rate	7 fps @ 3840 \times 2748	
Dynamic range	65 dB	
SNR	34 dB	
Gain	0 dB to 15.3 dB	
Exposure time	50 μs to 2 sec	
Exposure mode	Off/Once/Continuous exposure mode	
Mono/color	Mono	Color
Pixel format	Mono 8/10/10p/12/12p	Mono 8/10/12, Bayer GR 8/10/10p/12/12p YUV422Packed, YUV422_YUYV_Packed, RGB 8
Binning	Supports 1 \times 1, 2 \times 2	
Decimation	Not support	
Reverse image	Supports horizontal reverse image output	
Image buffer	128 MB	
Electrical feature		
Data interface	Gigabit Ethernet, compatible with Fast Ethernet	
Digital I/O	6-pin Hirose connector provides power and I/O, including opto-isolated input \times 1 (Line 0), opto-isolated output \times 1 (Line 1), bi-directional non-isolated I/O \times 1 (Line 2).	
Power supply	12 VDC, supports PoE	
Power consumption	Typ. 2.6 W @ 12 VDC	
Mechanical		
Lens mount	C-mount	
Dimension	29 mm \times 29 mm \times 42 mm (1.1" \times 1.1" \times 1.7")	
Weight	Approx. 68 g (0.15 lb.)	
Ingress protection	IP30 (under proper lens installation and wiring)	
Temperature	Working temperature: 0 $^{\circ}\text{C}$ to 50 $^{\circ}\text{C}$ (32 $^{\circ}\text{F}$ to 122 $^{\circ}\text{F}$) Storage temperature: -30 $^{\circ}\text{C}$ to 70 $^{\circ}\text{C}$ (-22 $^{\circ}\text{F}$ to 158 $^{\circ}\text{F}$)	
Humidity	20% RH to 80% RH (no condensation)	
General		
Client software	MVS or third-party software meeting with GigE Vision Protocol	
Operating system	32/64-bit Windows 7/10, 32/64-bit Linux	
Compatibility	GigE Vision V1.2, GenICam	
Certification	CE, RoHS, KC	