

# MV-CE050-30UM/UC

5.0 MP 1/2.5" CMOS USB3.0 Area Scan Camera



GEN*i*CAM

USB<sup>TM</sup>  
VISION

## Introduction

MV-CE050-30UM/UC camera adopts Aptina AR0521 sensor to provide high-quality image. It uses USB3.0 interface to transmit non-compressed images in real time, and its max. frame rate can reach 44.7 fps in full resolution.

## Key Feature

- Supports auto and manual adjustment for gain, exposure control, LUT, Gamma correction, etc.
- Supports hardware triggering, software triggering and free run mode.
- Adopts M2 screw holes for securing cable that connects USB3.0 interface.
- Compatible with USB3 Vision Protocol, GenICam Standard, and the third-party software based on these protocol and standard.

## Available Model

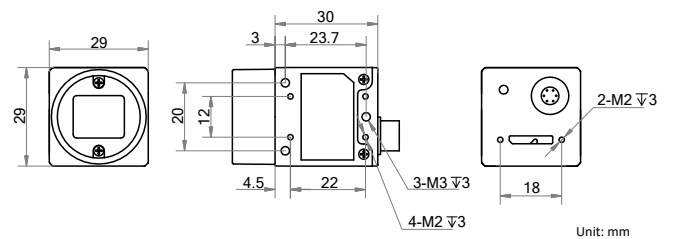
- Mono camera: MV-CE050-30UM
- Color camera: MV-CE050-30UC

## Applicable Industry

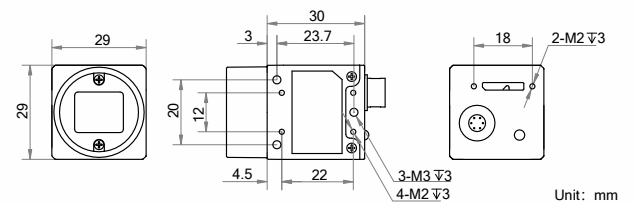
Electronic semiconductor, factory automation, liquor and beverage, medicine packing, etc.

## Dimension

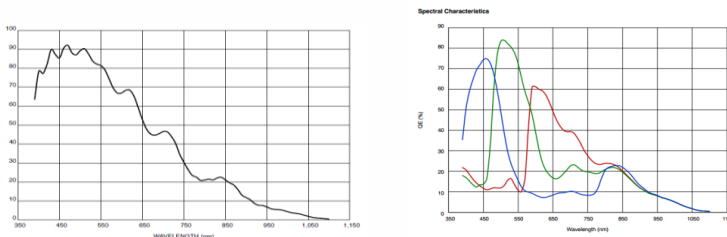
Mono camera:



Color camera:



## Sensor Quantum Efficiency



MV-CE050-30UM/UC



## Specification

Model	MV-CE050-30UM	MV-CE050-30UC
<b>Camera</b>		
Sensor type	CMOS, rolling shutter	
Sensor model	Aptina AR0521	
Pixel size	2.2 $\mu\text{m}$ $\times$ 2.2 $\mu\text{m}$	
Sensor size	1/2.5"	
Resolution	2592 $\times$ 1944	
Max. frame rate	44.7 fps @2592 $\times$ 1944	
Dynamic range	60 dB	
SNR	40 dB	
Gain	0 dB to 15 dB	
Exposure time	28 $\mu\text{s}$ to 0.6 sec	
Exposure mode	Off/Once/Continuous exposure mode	
Mono/color	Mono	Color
Pixel format	Mono 8/10/10p/12/12p	Mono 8/10/12, Bayer GR 8/10/10p/12/12p, YUV422_YUYV_Packed, YUV 422 Packed, RGB 8, BGR 8
Binning	Supports 1 $\times$ 1, 2 $\times$ 2, 4 $\times$ 4	
Decimation	Supports 1 $\times$ 1, 2 $\times$ 2, 4 $\times$ 4	
Reverse image	Supports horizontal and vertical reverse image output	
Image buffer	128 MB	
<b>Electrical feature</b>		
Data interface	USB3.0, compatible with USB2.0	
Digital I/O	6-pin Hirose connector provides power and I/O, including opto-isolated input $\times$ 1 (Line 0), opto-isolated output $\times$ 1 (Line 1), bi-directional non-isolated I/O $\times$ 1 (Line 2)	
Power supply	9 VDC to 24 VDC, supports USB3.0 power supply	12 VDC, supports USB3.0 power supply
Power consumption	Typ. 2.5 W @5 VDC (USB3.0 provides power supply)	
<b>Mechanical</b>		
Lens mount	C-mount	
Dimension	29 mm $\times$ 29 mm $\times$ 30 mm (1.1" $\times$ 1.1" $\times$ 1.2")	
Weight	Approx. 80 g (0.2 lb.)	Approx. 56 g (0.12 lb.)
Ingress protection	IP30 (under correct lens installation and wiring)	
Temperature	Working temperature: 0 $^{\circ}\text{C}$ to 50 $^{\circ}\text{C}$ (32 $^{\circ}\text{F}$ to 122 $^{\circ}\text{F}$ ) Storage temperature: -30 $^{\circ}\text{C}$ to 70 $^{\circ}\text{C}$ (-22 $^{\circ}\text{F}$ to 158 $^{\circ}\text{F}$ )	
Humidity	20% to 80% RH, non-condensing	
<b>General</b>		
Client software	MVS or third-party software meeting with USB3 Vision Protocol	
Operating system	32/64-bit Windows XP/7/10, 32/64-bit Linux and 64-bit MacOS	
Compatibility	USB3 Vision, GenICam	
Certifications	CE, RoHS, KC	

# HIKROBOT

Hangzhou Hikrobot Co., Ltd.  
en.hikrobotics.com

© Hangzhou Hikrobot Co., Ltd. All Rights Reserved.

Hangzhou Hikrobot does not tolerate any infringement. Any organization or individual may not imitate or reproduce in whole or in part of the content. The data herein is based on Hikrobot's internal evaluation. Actual data may vary depending on specific configuration and operating condition. The information herein is subject to change without notice. All the content has been checked conscientiously. Nevertheless, Hikrobot shall not be liable to damages resulting from errors, inconsistencies or omissions.