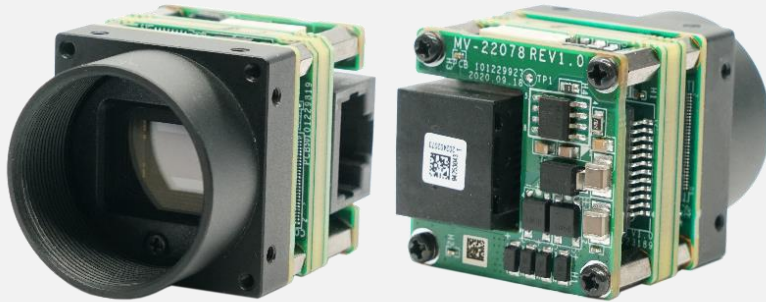


# MV-CB120-10GM

12 MP 1/1.7" CMOS GigE Board Level Camera



GEN<i>i</i>CAM

GigE  
VISION

## Introduction

MV-CB120-10GM camera adopts Sony® IMX226 sensor to provide high-quality images. It uses GigE interface to transmit images in real time, and its max. frame rate can reach 9.7 fps in full resolution. The camera is small in size, which can meet different spatial requirements.

## Key Feature

- Supports auto or manual adjustment of gain, exposure time, white balance, manual adjustment of Gamma correction, LUT, Binning, etc.
- Adopts GigE interface and max. transmission distance of 100 meters without relay.
- Compatible with GigE Vision V2.0 Protocol, GenICam Standard, and third-party software based on the protocol and standard.

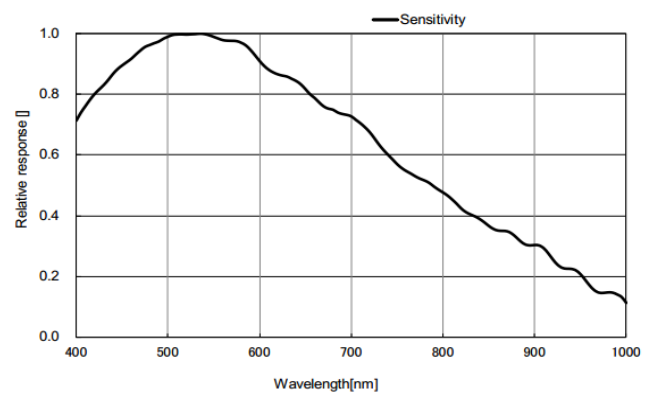
## Available Model

- Mono camera with C-mount lens: MV-CB120-10GM-C
- Mono camera with M12-mount lens: MV-CB120-10GM-S

## Applicable Industry

Electronic semiconductor, factory automation, logistics, bottle detection, medicine packing, etc.

## Sensor Quantum Efficiency

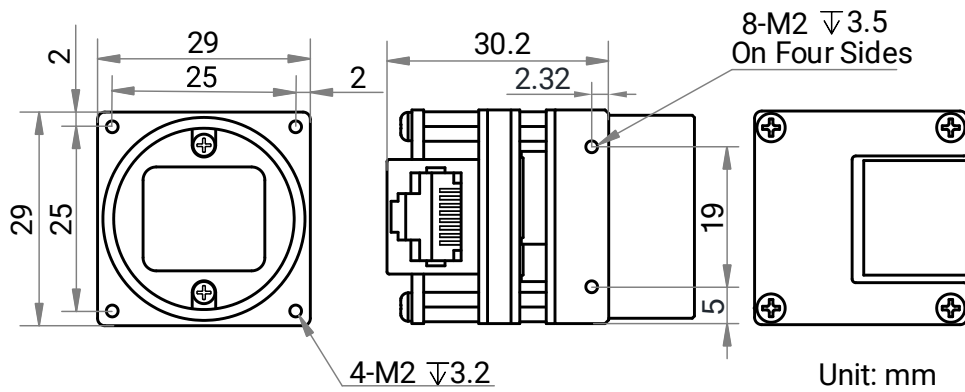


## Specification

<b>Model</b>	<b>MV-CB120-10GM</b>
<b>Performance</b>	
<b>Sensor type</b>	CMOS, rolling shutter
<b>Sensor model</b>	Sony® IMX226
<b>Pixel size</b>	1.85 μm × 1.85 μm
<b>Sensor size</b>	1/1.7"
<b>Resolution</b>	4024 × 3036
<b>Max. frame rate</b>	9.7 fps @ 4024 × 3036 Mono 8
<b>Dynamic range</b>	70.5 dB
<b>SNR</b>	40.5 dB
<b>Gain</b>	0 dB to 20 dB
<b>Exposure time</b>	34 μs to 2 sec
<b>Exposure mode</b>	Off/Once/Continuous exposure mode
<b>Mono/color</b>	Mono
<b>Pixel format</b>	Mono 8/10/10Packed/12/12Packed
<b>Binning</b>	Supports 1 × 1, 2 × 2, 4 × 4
<b>Decimation</b>	Supports 1 × 1, 2 × 2, 4 × 4
<b>Reverse image</b>	Supports horizontal and vertical reverse image output
<b>Electrical feature</b>	
<b>Data interface</b>	Gigabit Ethernet (1000 Mbit/s), compatible with Fast Ethernet (100 Mbit/s)
<b>Digital I/O</b>	6-pin connector provides power and I/O, including non-isolated input × 1 (Line 0), non-isolated output × 1 (Line 1), bi-directional non-isolated I/O × 1 (Line 2).
<b>Power supply</b>	9 VDC to 24 VDC, supports PoE
<b>Power consumption</b>	Typ. 1.9 W @ 12 VDC
<b>Mechanical</b>	
<b>Lens mount</b>	C-mount or M12-mount
<b>Dimension</b>	29 mm × 29 mm × 30.2 mm (1.1" × 1.1" × 1.2")
<b>Weight</b>	Approx. 45 g (0.1 lb.)
<b>Temperature</b>	Working temperature: 0 °C to 50 °C (32 °F to 122 °F) Storage temperature: -30 °C to 80 °C (-22 °F to 176 °F)
<b>Humidity</b>	20% RH to 80% RH (no condensation)
<b>General</b>	
<b>Client software</b>	MVS or third-party software meeting with GigE Vision Protocol
<b>Operating system</b>	32/64-bit Windows 7/10, 64-bit Windows 11, and 32/64-bit Linux
<b>Compatibility</b>	GigE Vision V2.0, GenICam
<b>Certification</b>	RoHS

## Dimension

Camera with C-mount:



Camera with M12-mount:

