

# MV-CA023-10UM/UC

2.3 MP 1/1.2" CMOS USB3.0 Area Scan Camera



GEN<i>i</i>CAM

USB™  
VISION

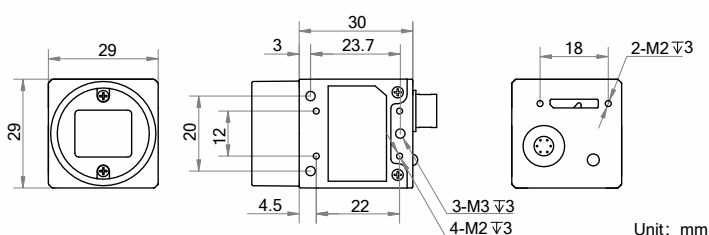
## Introduction

MV-CA023-10UM/UC adopts Sony® IMX249 sensor and provides high-quality image. It uses USB3.0 interface to transmit non-compressed images in real time, and its max. frame rate can reach 41 fps in full resolution.

## Key Feature

- Supports auto and manual adjustment for gain, exposure control, LUT, Gamma correction, etc.
- Supports hardware triggering, software triggering and free run mode.
- Adopts M2 screw holes for securing cable that connects USB3.0 interface.
- Compatible with USB3 Vision Protocol, GenICam Standard, and the third-party software based on these protocol and standard.

## Dimension



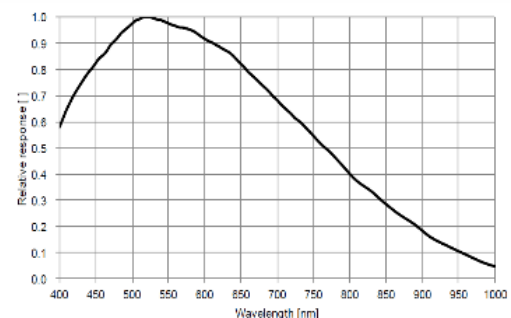
## Available Model

- Mono camera: MV-CA023-10UM
- Color camera: MV-CA023-10UC

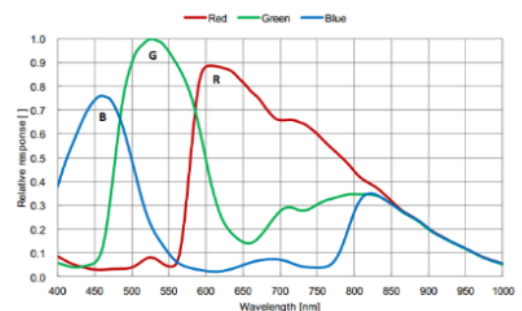
## Applicable Industry

Electronic semiconductor, factory automation, liquor and beverage, medicine packing, etc.

## Sensor Quantum Efficiency



MV-CA023-10UM



MV-CA023-10UC



## Specification

Model	MV-CA023-10UM	MV-CA023-10UC
<b>Camera</b>		
Sensor type	CMOS, global shutter	
Sensor model	Sony® IMX249	
Pixel size	5.86 μm × 5.86 μm	
Sensor size	1/1.2"	
Resolution	1920 × 1200	
Max. frame rate	41 fps @1920 × 1200	40 fps @1920 × 1200
Dynamic range	70 dB	
SNR	40 dB	
Gain	0 dB to 20 dB	
Exposure time	34 μs to 10 sec	
Exposure mode	Off/Once/Continuous exposure mode	
Mono/color	Mono	Color
Pixel format	Mono 8/10/10p/12/12p	Mono 8/10/12, Bayer RG 8/10/10p/12/12p, YUV422Packed, YUV422_YUYV_Packed, RGB 8, BGR 8
Binning	Supports 1 × 1, 1 × 2, 1 × 4, 2 × 1, 2 × 2, 2 × 4, 4 × 1, 4 × 2, 4 × 4	
Decimation	Supports 1 × 1, 1 × 2, 1 × 4, 2 × 1, 2 × 2, 2 × 4, 4 × 1, 4 × 2, 4 × 4	
Reverse image	Supports horizontal and vertical reverse image output	
<b>Electrical feature</b>		
Data interface	USB3.0, compatible with USB2.0	
Digital I/O	6-pin Hirose connector provides power and I/O, including opto-isolated input × 1 (Line 0), opto-isolated output × 1 (Line 1), and bi-directional non-isolated I/O × 1 (Line 2)	
Power supply	12 VDC, supports USB 3.0 power supply	
Power consumption	Typ. 2.5 W@5 VDC (USB3.0 provides power supply)	
<b>Mechanical</b>		
Lens mount	C-mount	
Dimension	29 mm × 29 mm × 30 mm (1.1" × 1.1" × 1.2")	
Weight	Approx. 56 g (0.12 lb.)	
Ingress protection	IP30 (under correct lens installation and wiring)	
Temperature	Working temperature: 0 °C to 50 °C (32 °F to 122 °F) Storage temperature: -30 °C to 70 °C (-22 °F to 158 °F)	
Humidity	20% to 80% RH, non-condensing	
<b>General</b>		
Client software	MVS or third-party software compatible with USB3 Vision Protocol	
Operating system	32/64-bit Windows XP/7/10, 32/64-bit Linux and 64-bit MacOS	
Compatibility	USB3 Vision, GenICam	
Certifications	CE, FCC, RoHS, KC	



Hangzhou Hikrobot Co., Ltd.  
en.hikrobotics.com